

Flat 50, Rusthalls Mansions South Parade, London, W4 1JR
£3,000 Per month
Council Tax Band: E



ADDISON GROVE



A bright and spacious two bedroom apartment, finished to the highest standard throughout. Ideally situated within this fantastic mansion block in Bedford Park, benefiting from high ceilings and an abundance of period features. The property comprises a generous and bright reception room with a feature fireplace and large bay window, master bedroom with ensuite bathroom, a second good sized double bedroom, family bathroom and a modern fitted kitchen/diner. The building also benefits from beautifully maintained communal hallways and gardens.

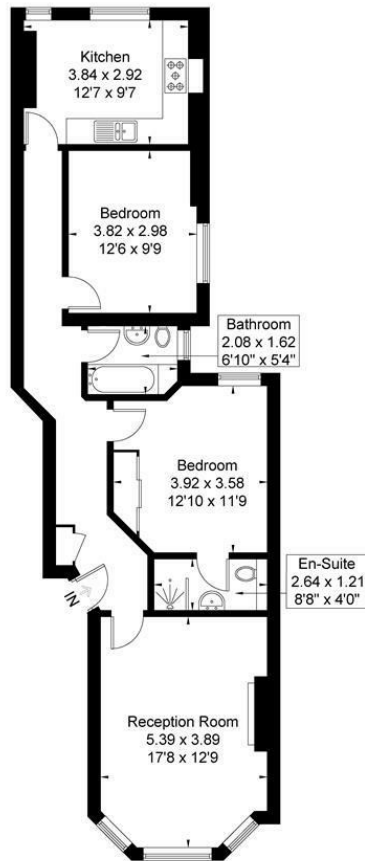
Rusthall Mansions is conveniently located just minutes from the boutiques, bars, and restaurants of Chiswick High Road. Public transport is easily accessible, with both Chiswick Park and Turnham Green stations (Piccadilly and District lines) less than 0.4 miles away. Additionally, the M4 provides motorists with easy access in and out of London.

Additional details:
EPC Rating: C



Building 7, Chiswick Park
566 Chiswick High Road
London
W4 5YG
02082260189
oliver@addisongrove.co.uk

Rusthall Mansions
Approximate Gross Internal Area = 79.9 sq m / 860 sq ft



First Floor

Although every attempt has been made to ensure accuracy, all measurements are approximate.
The floorplan is for illustrative purposes only and not to scale.
© www.perspective.co.uk

Energy Efficiency Rating		
	Current	Potential
Very energy efficient - lower running costs		
(92 plus) A		
(81-91) B		
(69-80) C	70	
(55-68) D		
(39-54) E		
(21-38) F		
(1-20) G		
Not energy efficient - higher running costs		
England & Wales	EU Directive 2002/91/EC	